



Epson Super Valve Plug Kit Process Guide # 3233

Epson Valve Plug Kit can fill the following 7 pin cartridges. Please note though that this kit cannot be used to fill the 9 pin cartridges like the T069 / T078. These types of cartridges require the JERO Refill Jig (#JE1067).

T007 / T008 / T009 / T013 / T014 / T015 / T016 / T017
T018 T026 / T027 / T028 / T029 / T0321 / T0322
T0323 / T0324 T0341 / T0342 / T0343 / T0344 / T0345
T0346 / T0347 T0348 T036 / T037 / T038 / T038125
T039 / T039025 / T040 / T041 T0422 / T0423 / T0424
T0431 / T0441 / T0442 / T0443 / T0444 T0461 / T0472
T0473 / T0474 / T0481 / T0482 / T0483 / T0484 T0485
T0486 / T0540 / T0541 / T0542 / T0543 / T0544 /
T0547 T0548 / T0549 / T0551 / T0552 / T0553 / T0554
/ T0591 T0592 T0593 / T0594 / T0595 / T0596 /
T0597 / T0598 T0599 / T0601

Parts Included :

- 1 - 30cc Fill Syringe
- 1 - Valve Plug Pack (20)
- 1 - Waste Bottle
- 1 - Ball Plug Pack (20)
- 1 - Ball Plug Pusher
- 1 - Tool Set (Insertion Tool, Probe, and Drill Bit)
- 3 - Fill Tip Lures

Special Notes:

- DO NOT touch the chip circuitry.
- DO NOT use tap water to process cartridge.

Filling Process:

Step 1: Use the Probe tool to puncture the tape covering the fill hole, which is located adjacent to the Exit Port. **Figure 1 & 2**

Step 2: Place the Valve Plug onto the Insertion tool and insert the plug into cartridge. This may take a little force. Make sure the plug is seated completely against the surface of the cartridge. **Figure 3 & 4**

Step 3: Insert the waste luer into the exit port of the cartridge. Make sure that it is pushed all the way into exit port. **Figure 5**

Step 4: Attach the fill tip luer to the syringe and then fill the syringe with ink. **Figure 6**

Step 5: Insert the syringe tip into valve plug. **Figure 7**

Step 6: While holding the waste luer into the exit port, slowly inject ink into the cartridge. You will see the old ink and air evacuate thru the waste tube and into the waste container. When all of the old ink is evacuated you will see air in the line. When the new ink has completely filled the cartridge you will see no air in the line, only a solid stream of ink. **Figure 8**

Step 7: First remove the syringe from the valve plug. Then remove the waste luer from cartridge.

Step 8: Press the pressure release valve, and insert a ball plug into the valve plug **Figure 9 & 10**

Step 9: Reset the chip using an Epson Chip Resetter. Available on Amazon – search by model number.

Step 9: Wipe excess ink from the cartridge and package.



Figure 1



Figure 2



Figure 3



Figure 4

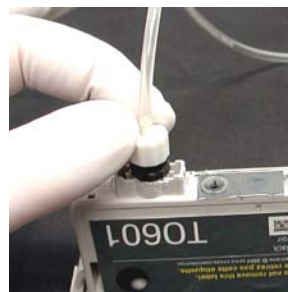


Figure 5



Figure 6



Figure 7



Figure 8

Pressure release valve



Figure 9

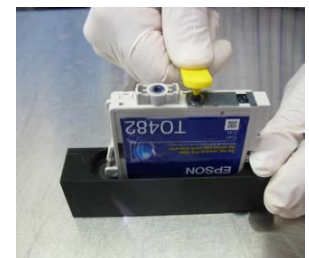


Figure 10

Alternate Method for Undersized Hole:

Note: For Cartridges that do not have the correct size fill port hole, use the following step in place of step 2.

Alt Step 1: Insert the Drill Bit tool into a Drill, and then drill the hole out. **Caution:** Be careful to keep the Drill perpendicular to the cartridge, so that you don't make the hole too large. **Note:** This hole is located adjacent to the exit port on the 7-pin cartridges. **Figure 11 & 12**

Next: Continue to Step 2 above.

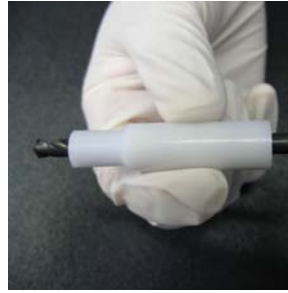


Figure 11



Figure 12